



New Product Overview

EXI Push Pads

EXI-S4PP/EA & EXI-S4PP/PTO Square 4.5” Push Pads



EXI-S4PP/EA



Surface

Flush

EXI-S4PP/PTO



Surface

Flush

A Range Of Push Pads Suitable For Use With Automatic Door & Access Controlled Locking Systems



Specification

- **Contacts: Double Pole N/O - N/C**
- **Momentary Operation**
- **Voltage Free Contacts**
- **Internal or External Use**
- **Weatherproof**
- **Operating Temperature -20° to $+60^{\circ}$**
- **New Thicker Stainless-Steel (304) Plate**

Features

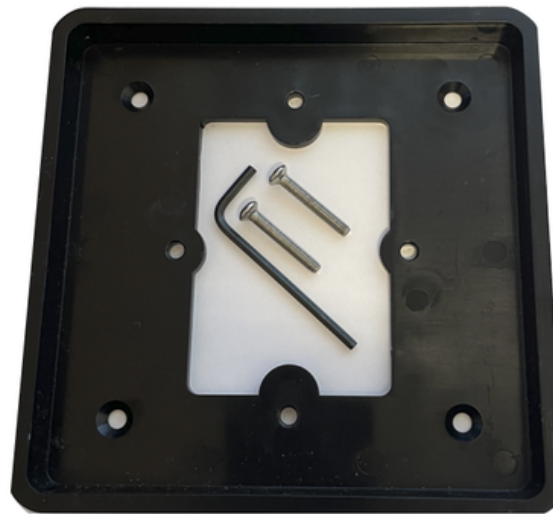
- **The Push Pad Is Recessed Into The Back Box Insert Plate To Remove Pinch Points, And Help Prevent Vandalism**
- **Lower Depth Terminal Connections On Back Of Switch Plate**
- **New End-User Friendly Replacement Battery Compartment For Wireless Versions**
- **Surface & Flush Mount Applications In One Box**
- **Flush Mount Suits UK Concrete Back Boxes**



Surface Application



Push Plate



Back Box Insert Plate



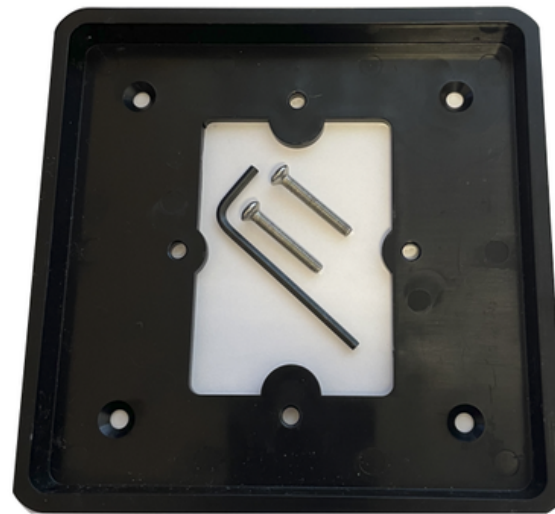
Surface Back Box



Flush Application



Push Plate



Push Plate Insert



Flush Trim



Flush Application



New Improved Back Box

- Better External Shiny Finish
- User Friendly Battery Compartment
- Internal 9V Battery Positioning Cradle

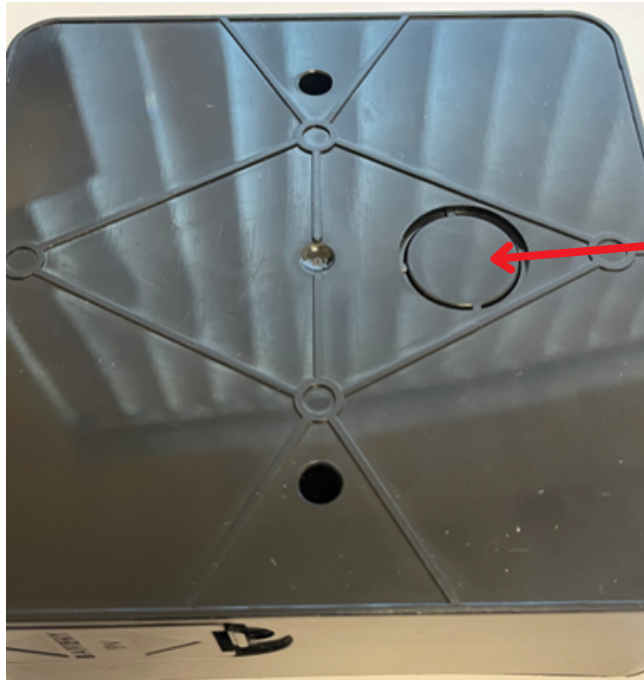
Surface Back Box



New Improved Back Box

Three Cable Entry Knock-Outs For
Conduits Entry (Top, Bottom & Back)

Surface Back Box



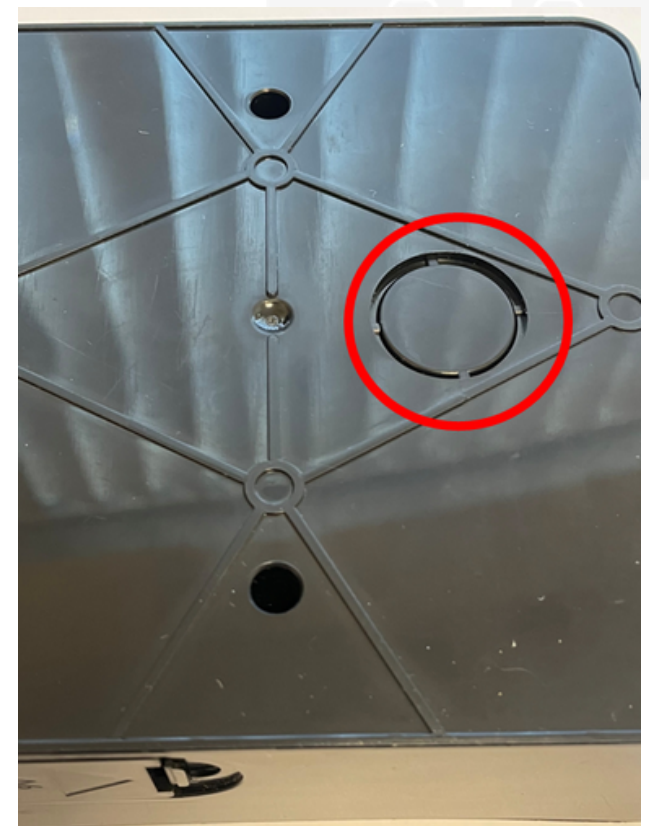
New Improved Back Box



Top Knock-Out



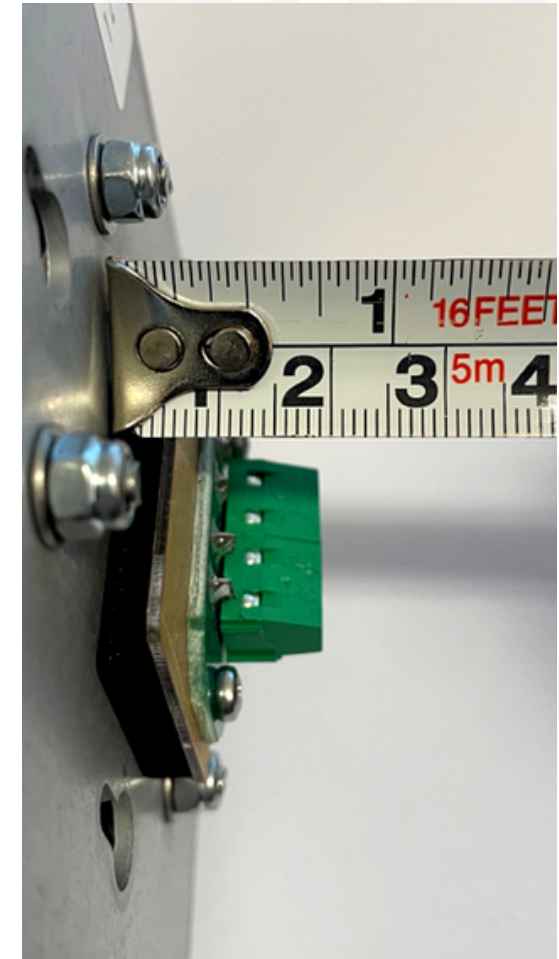
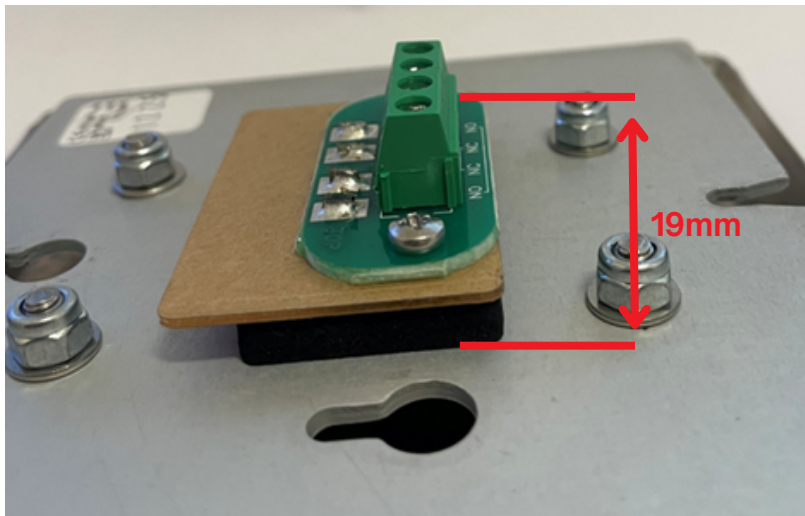
Bottom Knock-Out



Back Knock-Out

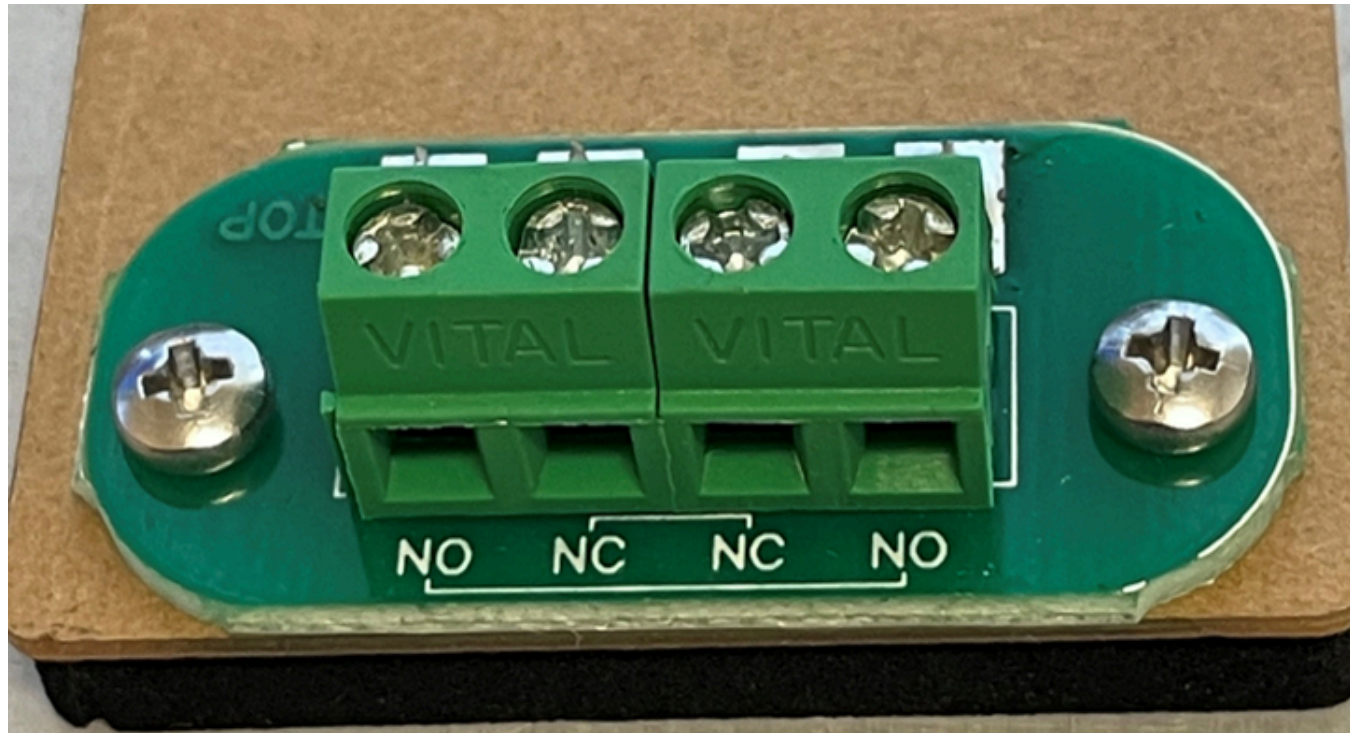
New Improved Back Box

Lower Depth Terminal Connections
On Back Of Switch Plate For Easier
Installation And More Room



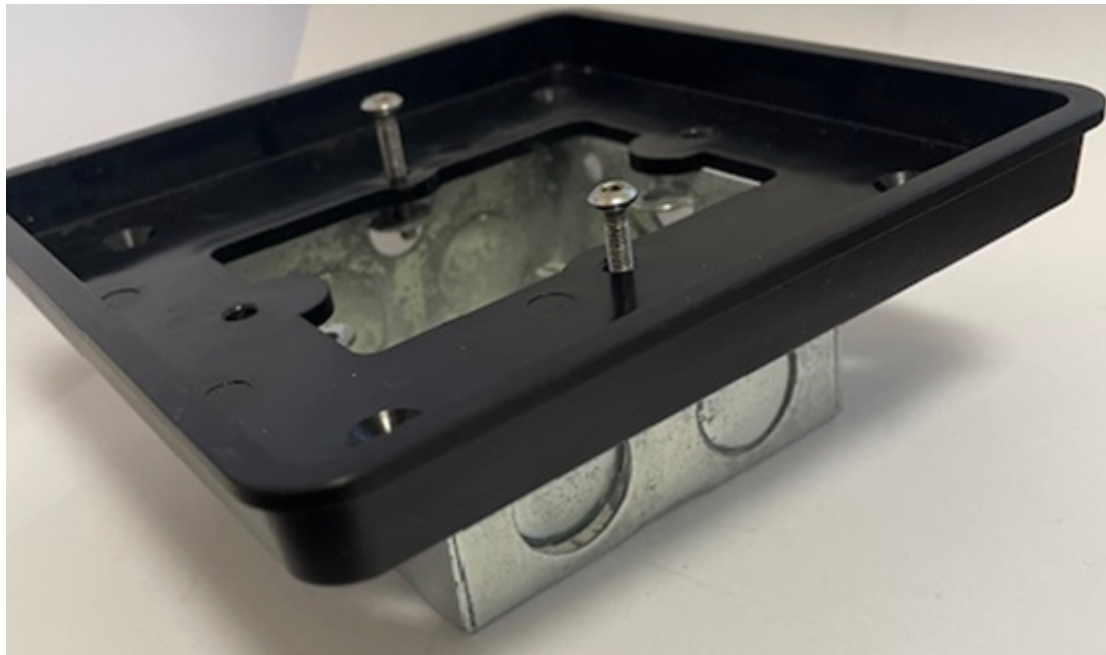
New Improved Back Box

Terminal Block Contacts: Double Pole N/O - N/C



New Improved Back Box

Flush Mount Suits UK Concrete Back Boxes



Controls For Doors Ltd

 01883 652 652

 sales@cfdltd.com

 www.controlsfordoors.com

